

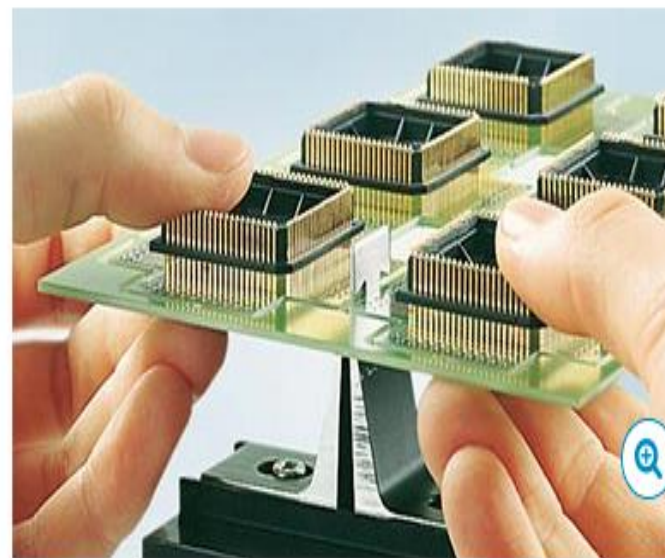


PCBs are separated carefully and quickly, off-cuts are removed precisely and smoothly. A two-part matrix enables the different blades to be assembled resp. exchanged easily.

Off-cuts are punched out with the help of a compressed air cylinder. The operating pressure can be set on the unit.

Safe operation with HEKTOR 2

PCBs are positioned with their milled groove over the blade onto the matrix. The off-cut is fed below the punch blade. A foot switch triggers the punching and the off-cut is collected in the bottom tool.



T blade

to punch out off-cuts on the right and left margins. Turning the PCB is not necessary



L blade

used with small distances between the off-cuts



Matrix

included in the scope of delivery